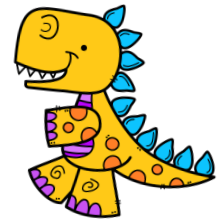


# Dinopik' !



## RÈGLE DU JEU :

Au préalable : Imprimer et plastifier les fiches et découper chaque puzzle en suivant les zigzags.

Les élèves doivent recomposer les puzzles en faisant correspondre le nombre inscrit dans un pique avec le bon nombre de piques qu'il y a sur le dos du ou des dinosaure(s).

Ce jeu peut être proposé dans des ateliers autonomes. Il est évolutif avec une étendue de 1 à 30.

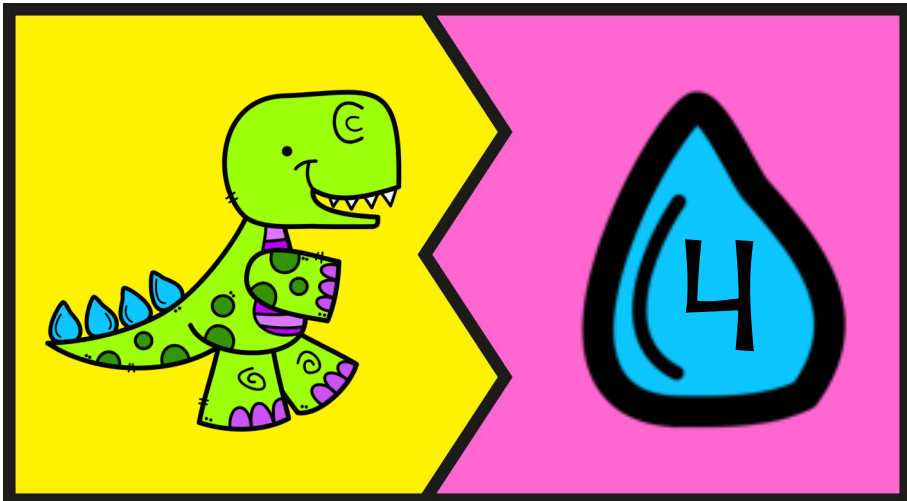
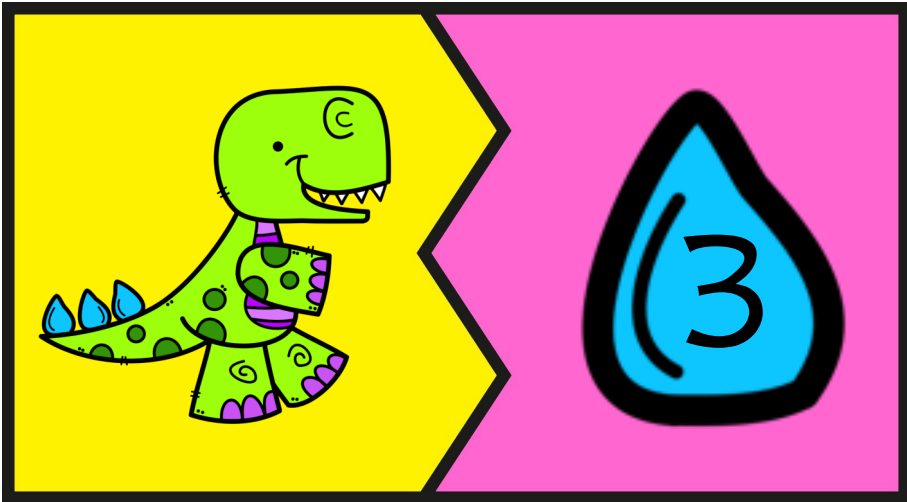
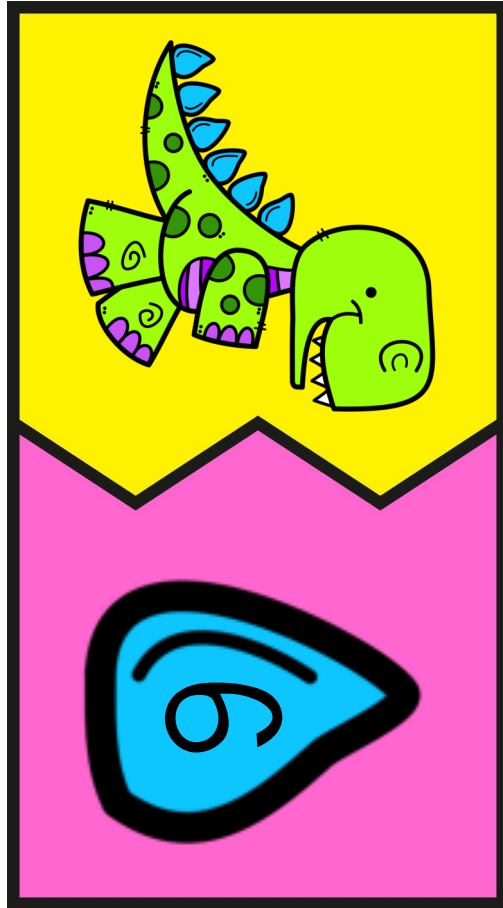
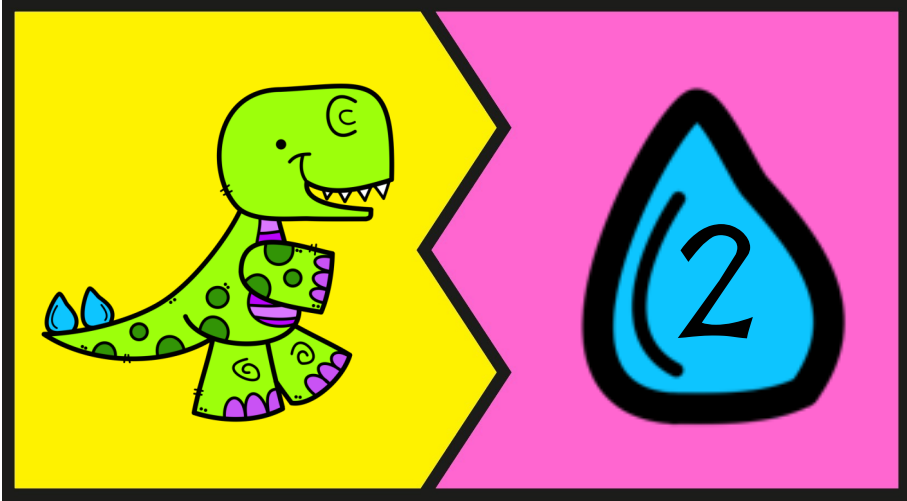
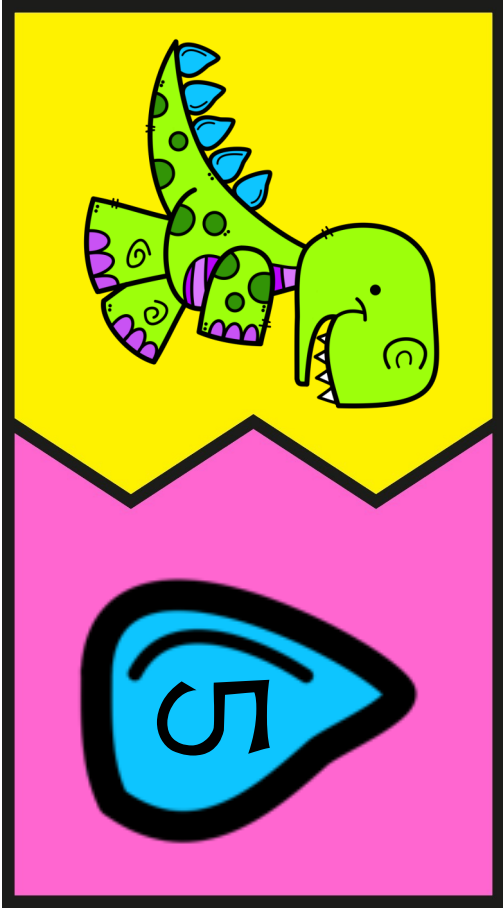
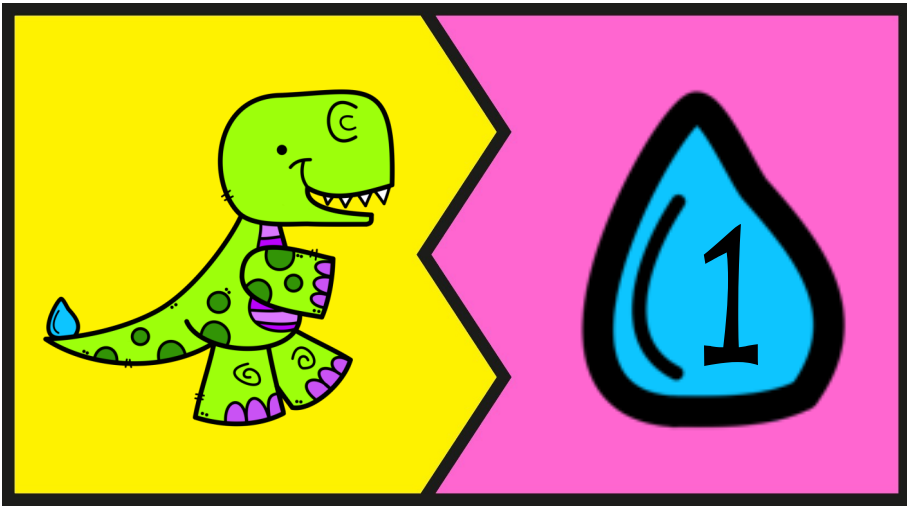
Il permet une première approche de la notion de dizaine.

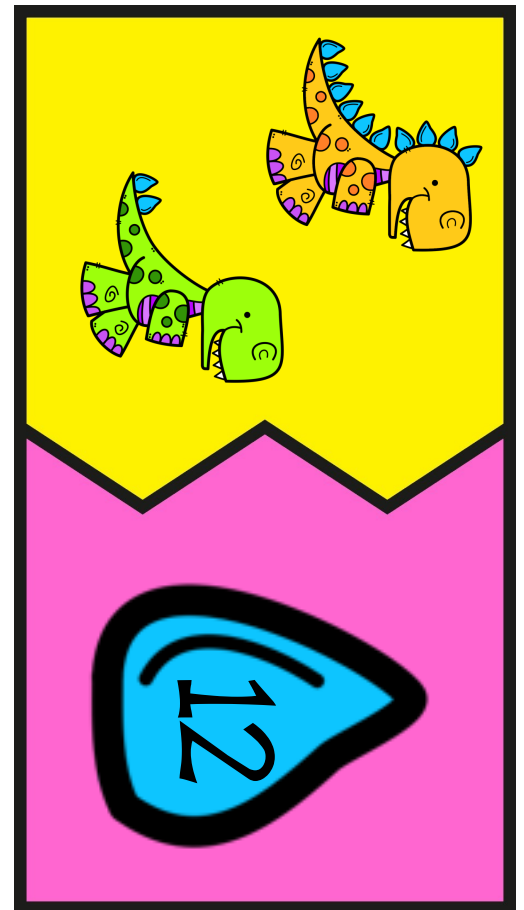
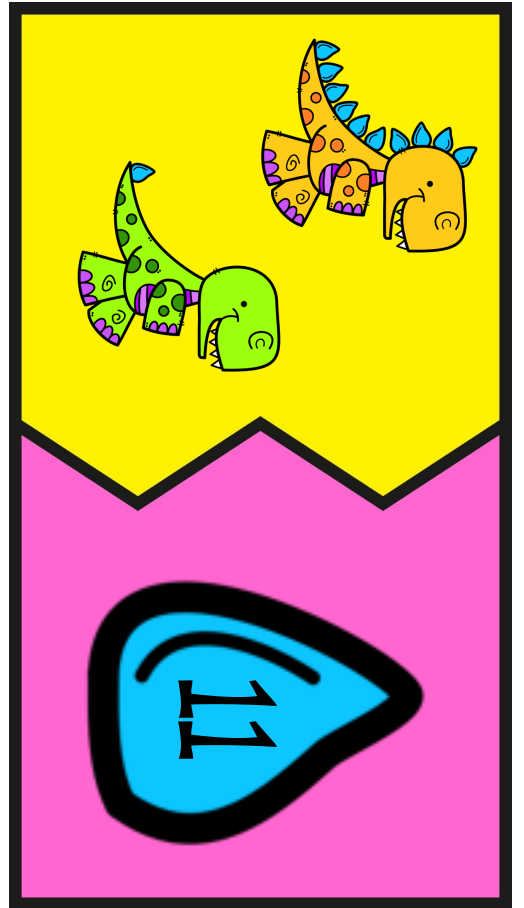
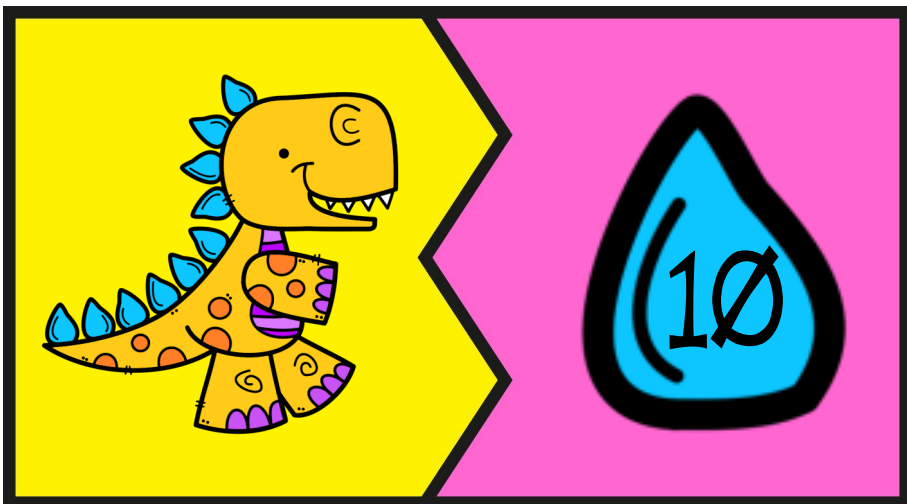
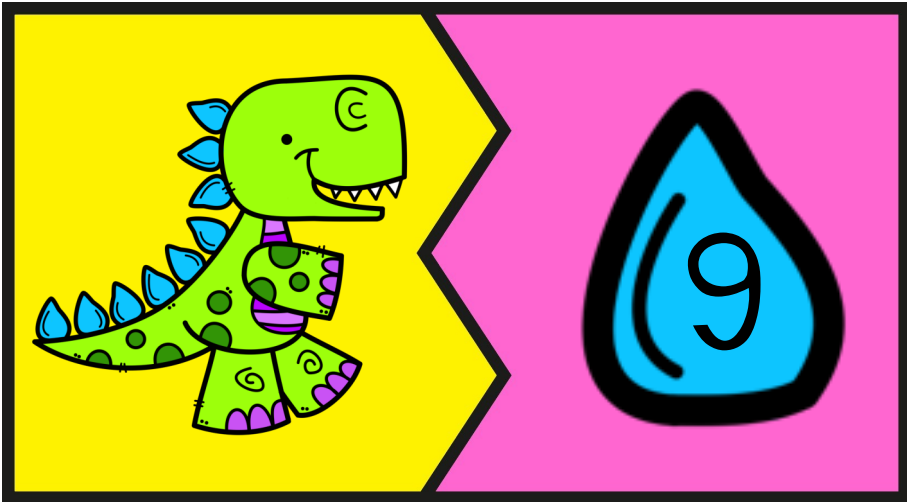
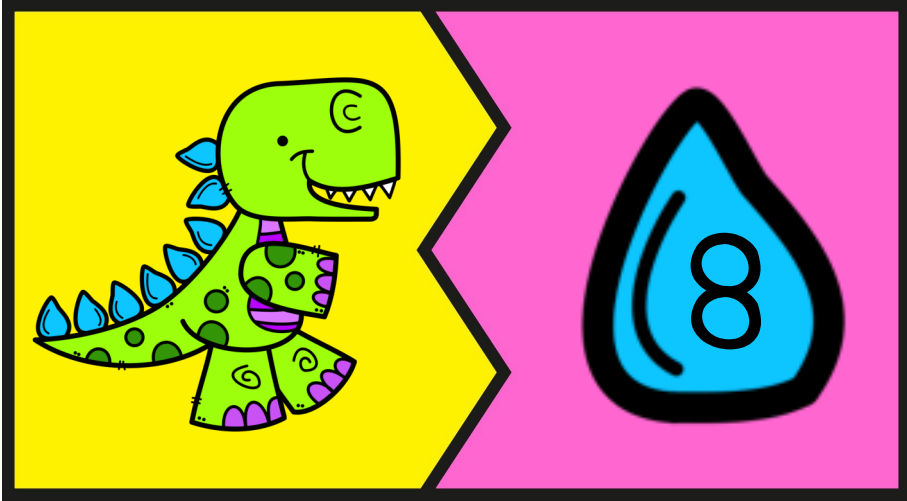
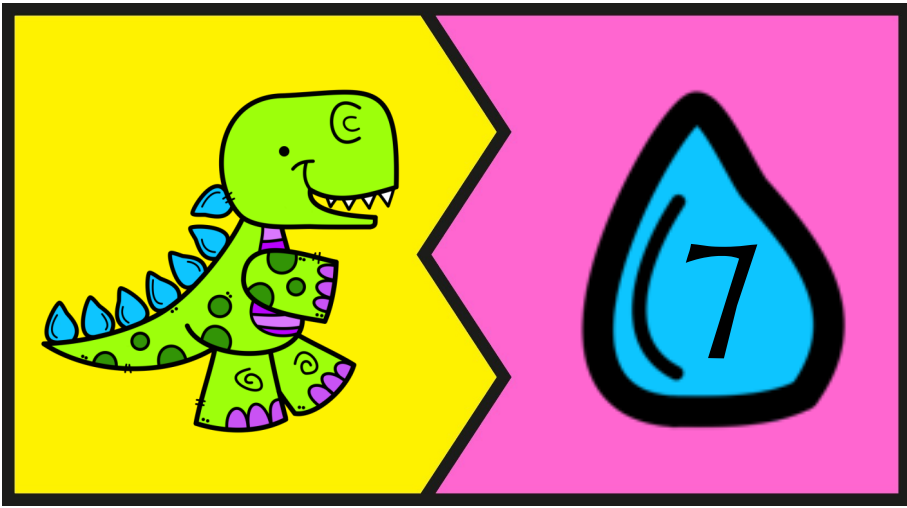
Ce jeu a été réalisé par Vaness Antares de « [La classe dans les étoiles](#) ».

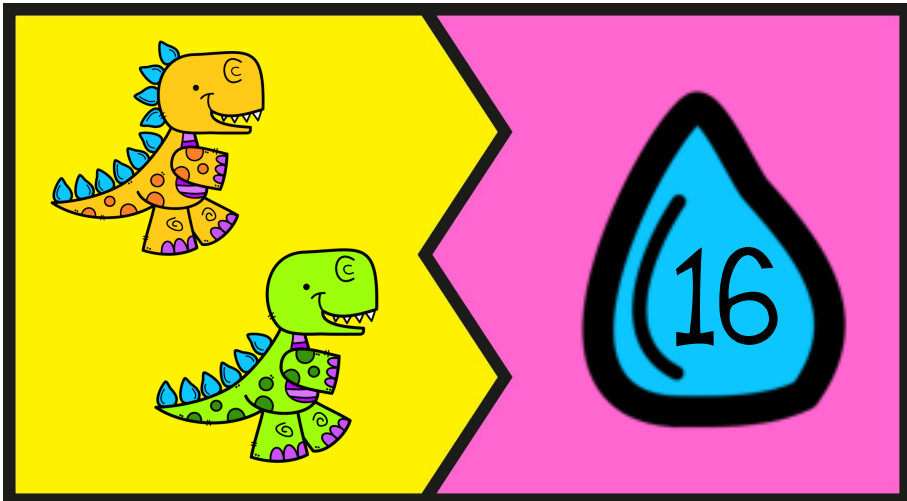
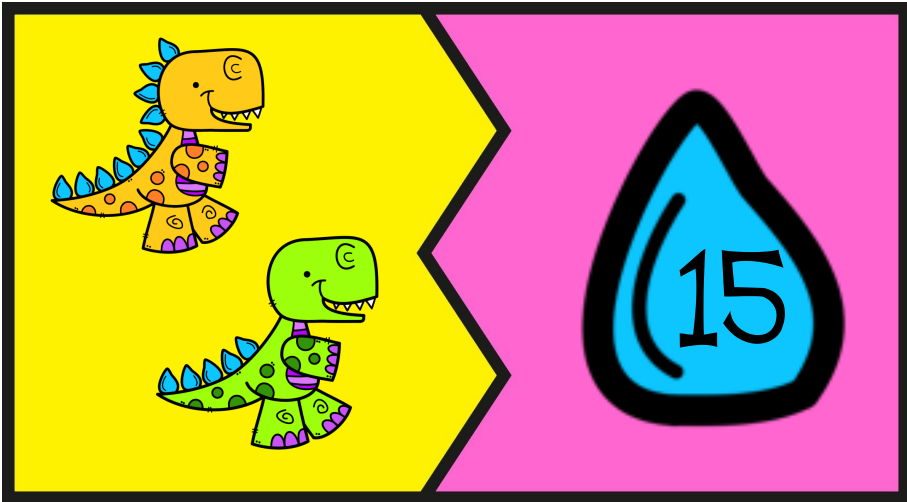
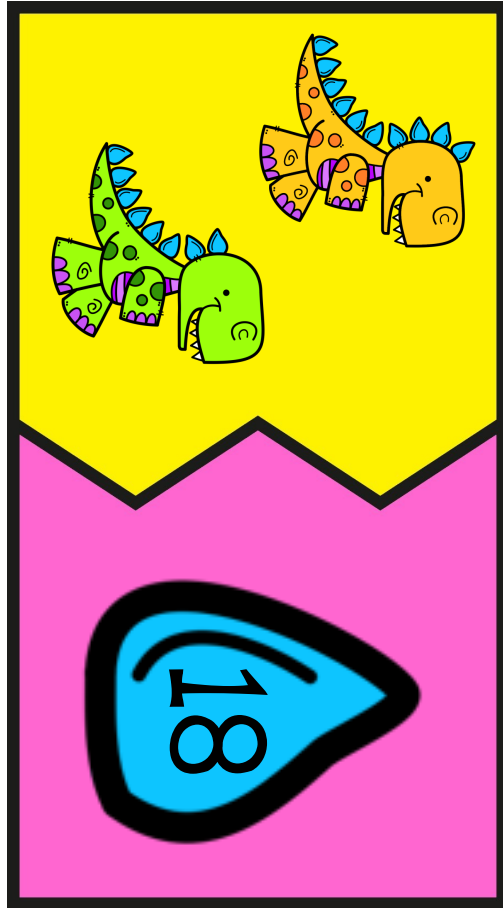
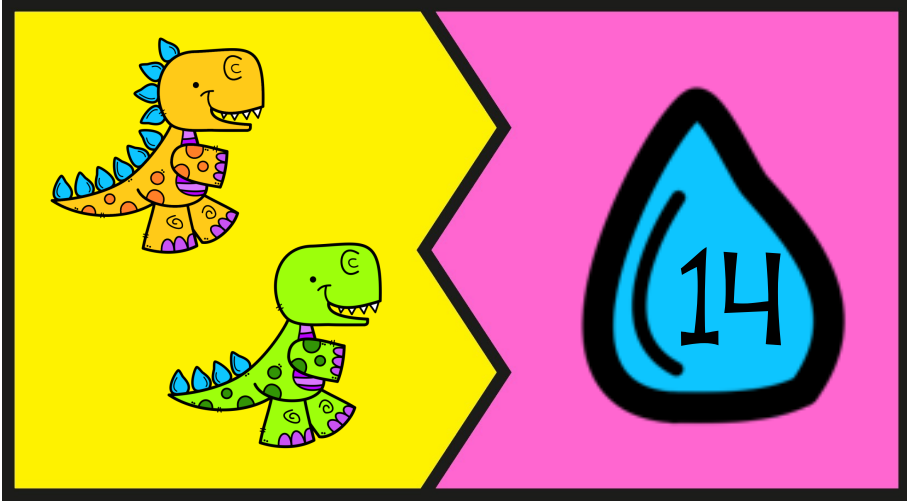
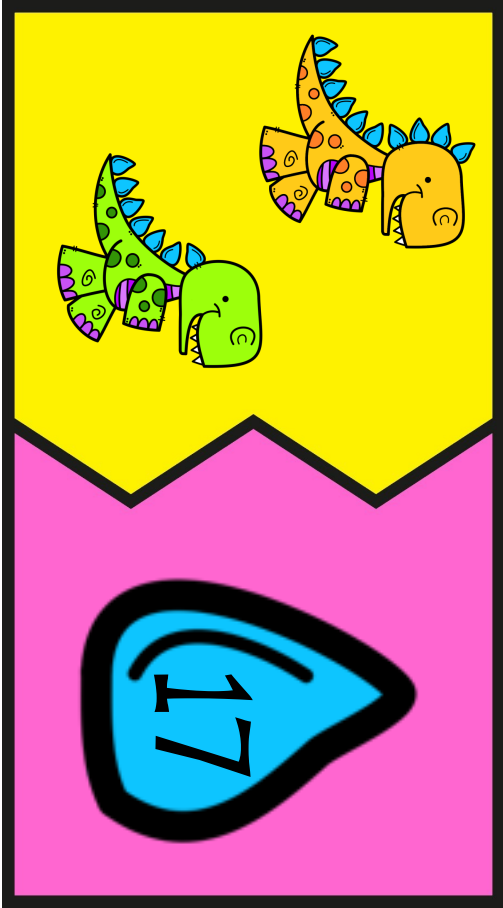
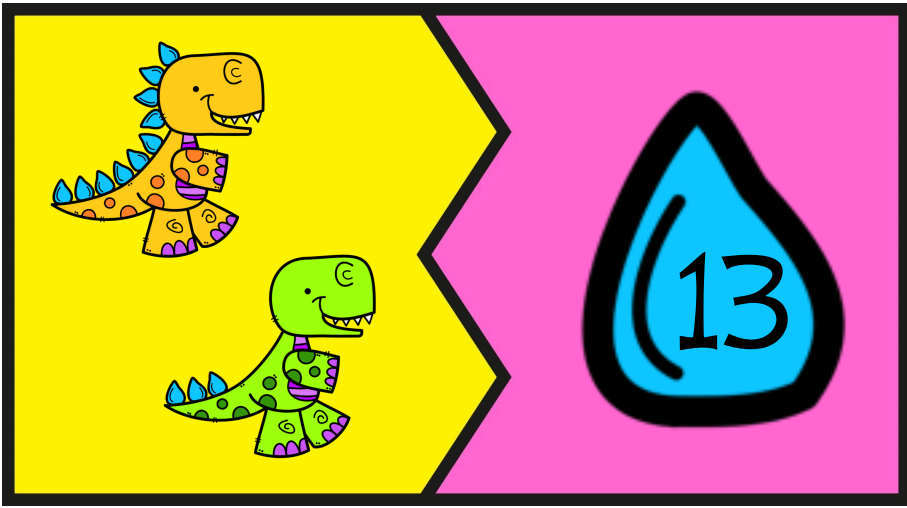
Les images utilisées sont l'œuvre de Krista Walden :

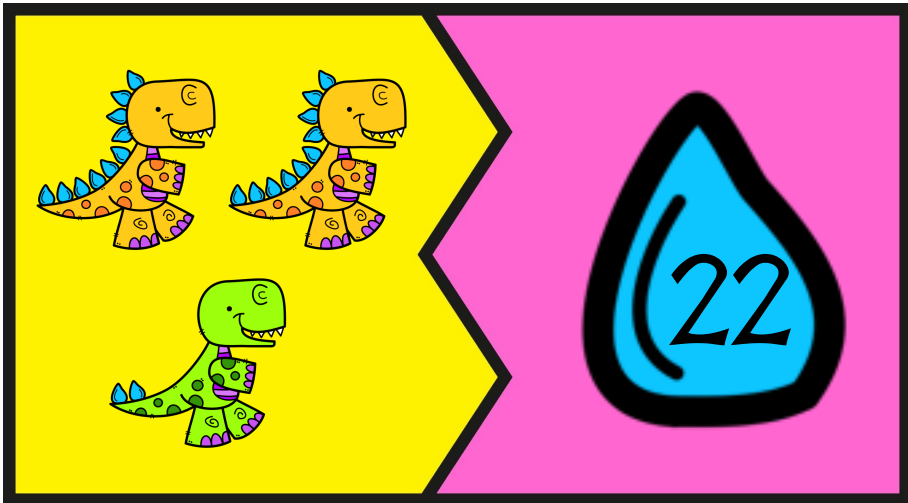
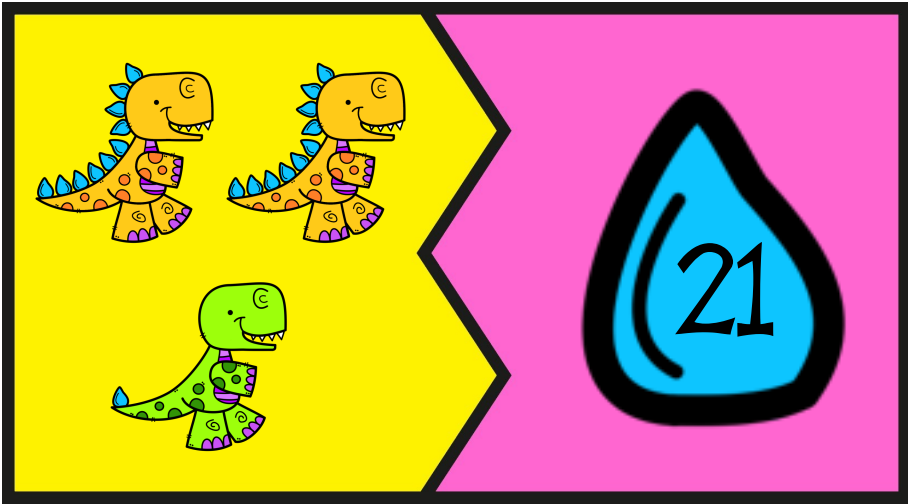
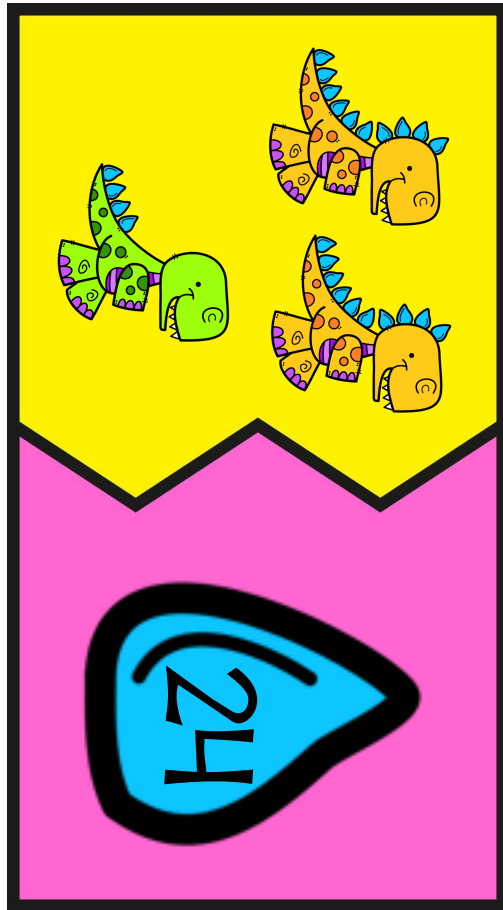
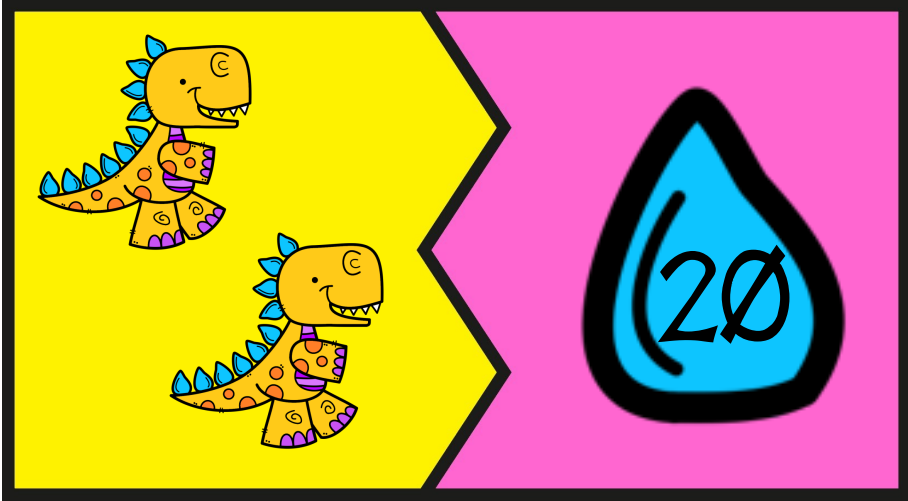
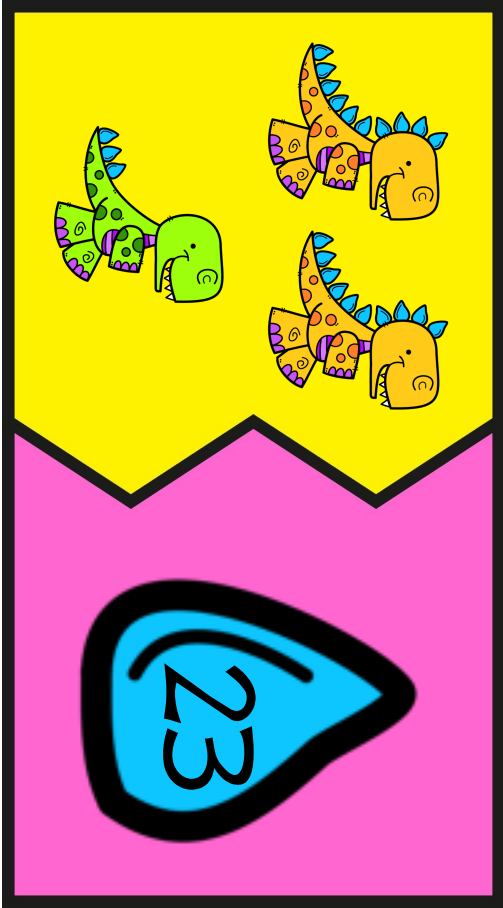
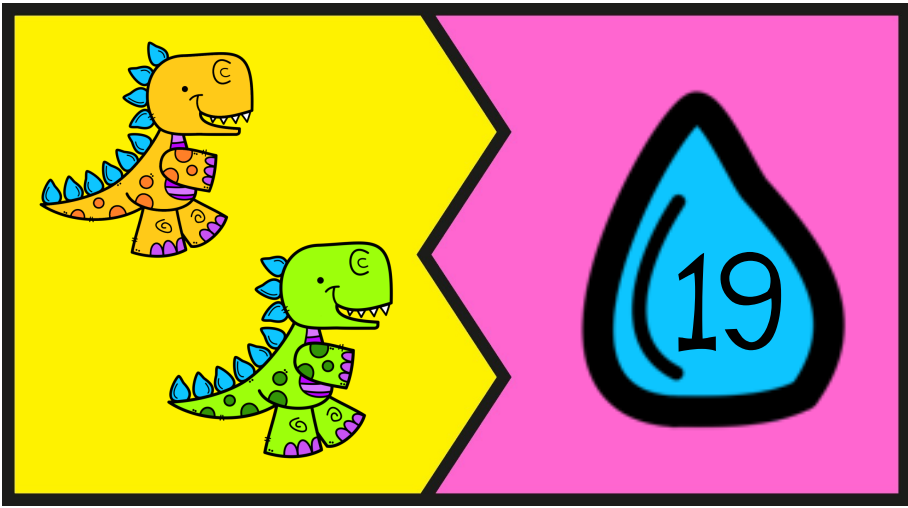
<https://www.teacherspayteachers.com/Store/Krista-Walden-Creative-Clips>

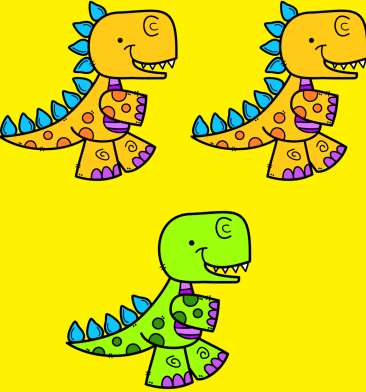









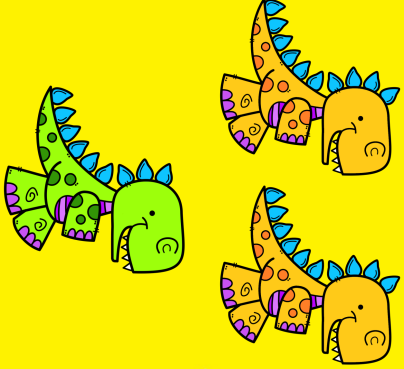




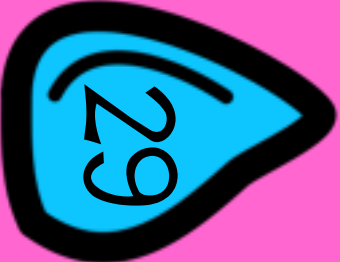
Three cartoon dinosaurs are shown on a yellow background. Two are orange with blue spikes and purple patterns, and one is green with blue spikes and purple patterns.



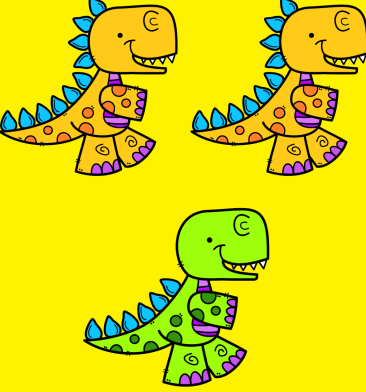
A blue teardrop shape with a black outline contains the number 25.




Four cartoon dinosaurs are shown on a yellow background. Two are orange with blue spikes and purple patterns, and two are green with blue spikes and purple patterns.



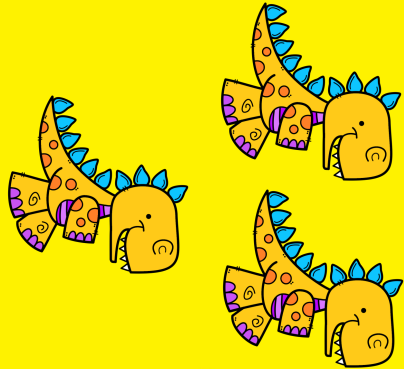
A blue teardrop shape with a black outline contains the number 29.



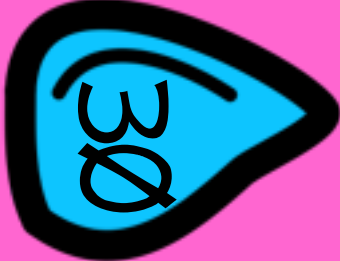
Three cartoon dinosaurs are shown on a yellow background. Two are orange with blue spikes and purple patterns, and one is green with blue spikes and purple patterns.



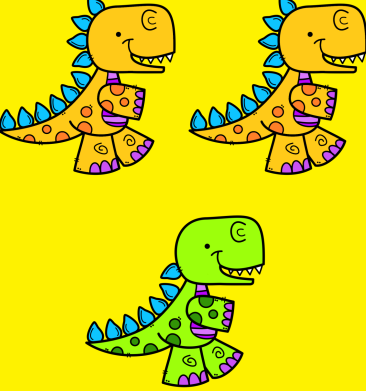
A blue teardrop shape with a black outline contains the number 26.




Four cartoon dinosaurs are shown on a yellow background. Two are orange with blue spikes and purple patterns, and two are green with blue spikes and purple patterns.



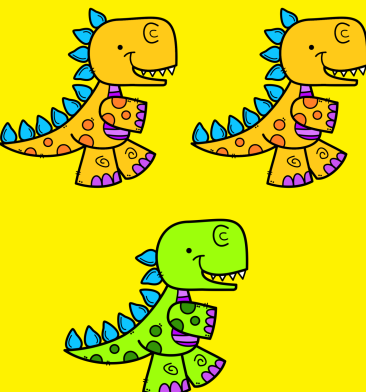
A blue teardrop shape with a black outline contains the number 30.




Three cartoon dinosaurs are shown on a yellow background. Two are orange with blue spikes and purple patterns, and one is green with blue spikes and purple patterns.



A blue teardrop shape with a black outline contains the number 27.



Three cartoon dinosaurs are shown on a yellow background. Two are orange with blue spikes and purple patterns, and one is green with blue spikes and purple patterns.



A blue teardrop shape with a black outline contains the number 28.